

To eliminate health inequity in societies 消除社會上的健康不公平



醫護行者 Health In Action



Organization in Special
Consultative Status with
the Economic & Social
Council, UN

范寧醫生

仁濟醫院外科專科副顧問醫生
香港中文大學名譽臨床助理教授
香港中文大學賽馬會公共衛生及基層醫學院導師
香港中文大學工商管理學院傑出學長

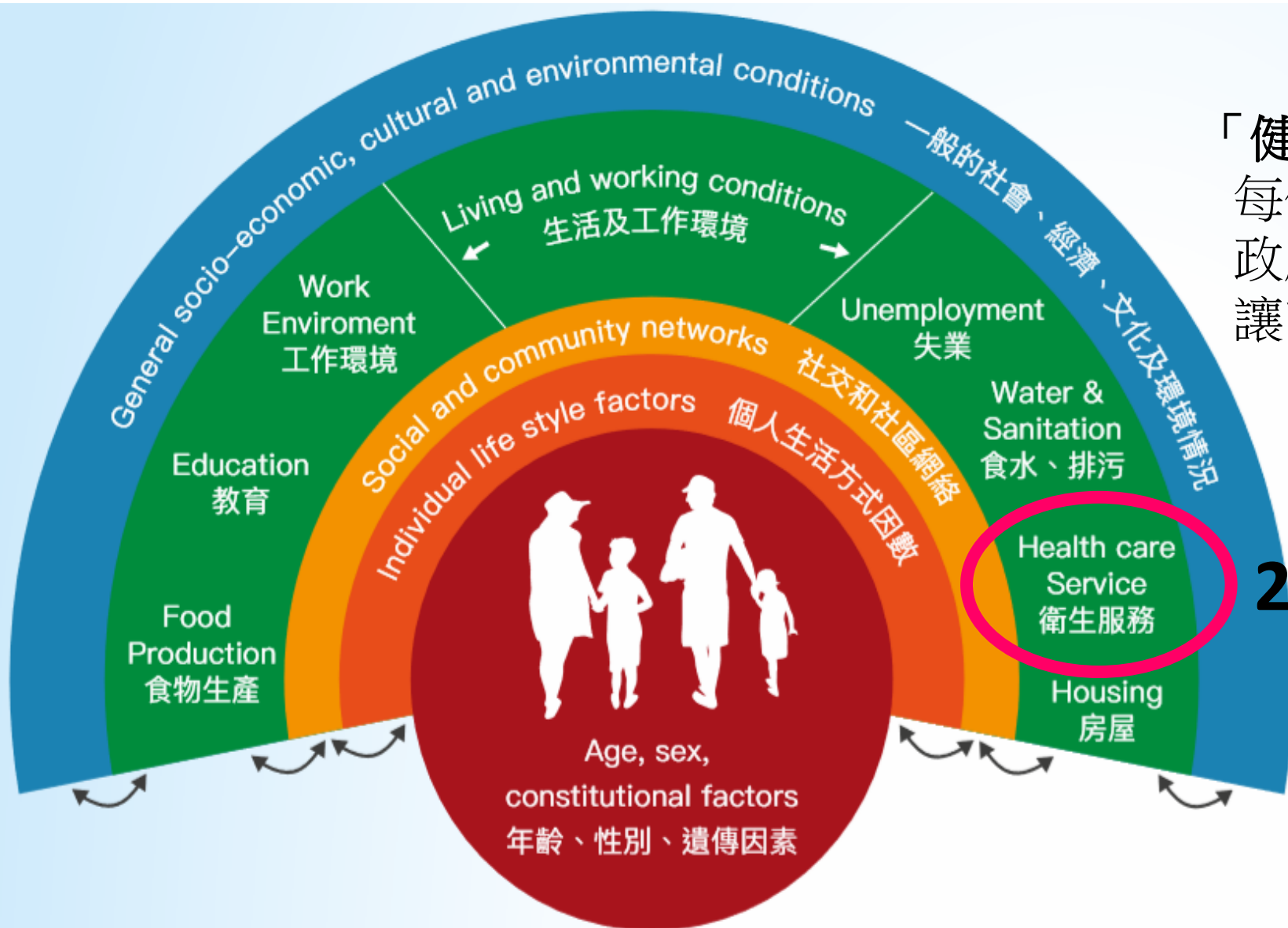
社聯政策研究及倡議常設委員會
社聯家庭及社區服務專責委員會
社聯老人服務專責委員會



Health In Action 醫護行者



《經濟、社會及文化權利國際公約》明確表明「人人有權享有能達到的最高的體質和心理健康的標準」(OHCHR, 2008)。










「健康人權 (right to health)」
每個人應有同等健康
政府營造合適的社會環境，
讓市民享有平等機會獲得健康

20 – 40%

影響健康的社會性因素
Social Determinants of Health

Role of Health system

The role of the health system becomes particularly relevant through the issue of access, which incorporates differences in exposure and vulnerability

1. Improve equitable access to care 
2. promote intersectoral action to improve health status. 
3. Food supplementation through the health system 
4. Transport policies and intervention for tackling geographic barrier to access health care 
5. ensuring that health problems do not lead to a further deterioration of people's social status 
6. facilitating sick people's social reintegration. 
7. Contributes to social participation and the empowerment of the people, including participatory space through which to take part in monitoring, evaluation and decision-making about system priorities and the investment of resources. 

Role of primary health care

1. Enhance population-wide health status
 2. Provide preventive measures and appropriate and organized treatment for everyone
- Access to the health care system is the most important element and is the main factor to ensure health equity



受訪者的背景及健康狀況

37.8%
有兩項或以上的
心血管風險因素



35.6% 肥胖 (BMI ≥ 25)

46.6%
超重或肥胖 (BMI ≥ 25)

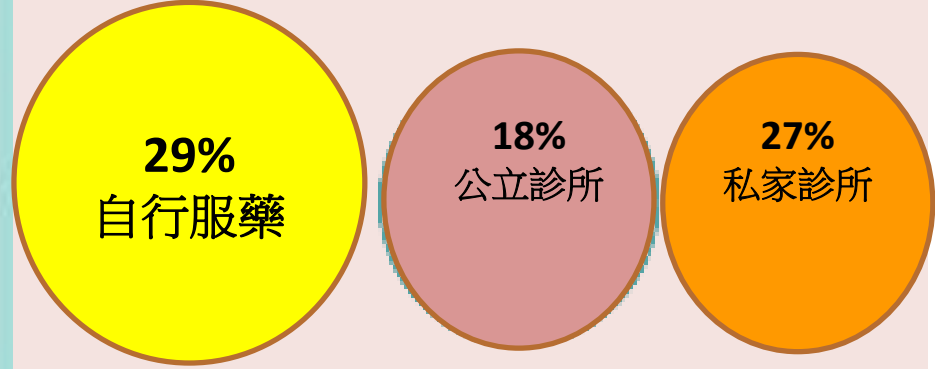
27.0%
上壓 ≥ 140
或下壓 ≥ 90

13.3%
總膽固醇超標
16.0%
低密度膽固醇超標

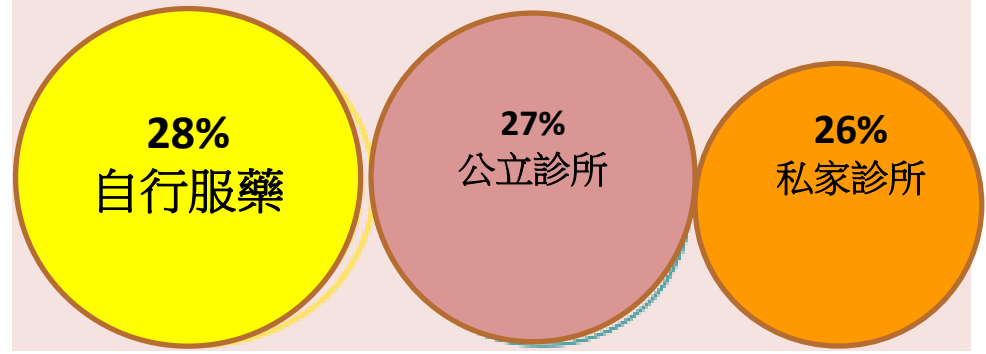
56.2%
有長期痛症
或傷患

生病時的處理方法

全職在職貧窮人士：



兼職在職貧窮人士：



Nurse and allied health profession manage common health issues in the community

- ✓ **NURSES** have been recognized by The American Heart Association and the WHO on



Reduction of CVD
risk factors



Optimizing cholesterol level,
hypertension and diabetes
management

- ✓ **Nurse-led primary health care service** have been adopted in HK, Australia & USA
- ✓ **ALLIED HEALTH** profession can contribute on **providing preventive services** in multiple studies

- Diabetes Prevention Program
- Nutritional Therapy
- Exercise & Physiotherapy

- Community Pharmacy
- Social Work
- Community Health Work

Kwai Tsing Working Poor Health Management Project

A. WP identification

WP catchment –

1. Mobile health centers & screen spots
2. Referral from NGOs, Hospital Authority, Department of Health
3. Employers in Kwai Tsing
4. Promotion through HIA health ambassadors & HIA working poor members

B. Person-centered + Family Approach by multidisciplinary team

B1 Full Integrated Support Team



Nurse



Social Worker



Physiotherapist



Community Nutritionist



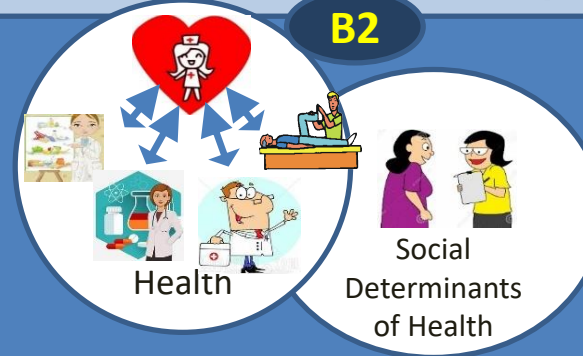
Community Pharmacist



Volunteer Doctor / GP

Care Coordination and Planning

B2



Person-Centered + Family Approach

Health Intervention

B3

1. Nurse Clinic
2. Pain & Occupational Unit
3. Health Weight Management Unit
4. Community Pharmacy
5. Individual/Family Health Plan
6. SDH management

Health concerns

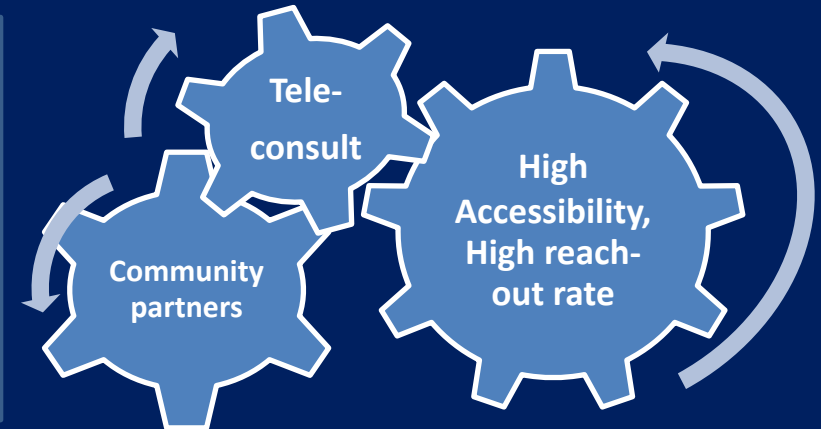
Intervene, Follow up and Monitoring

Health maintenance

C. WP health Journey

D. Impacts

1. Avoid unexpected patient journey
2. Decrease chronic illness patient rate
3. Increase healthy living days
4. Decrease unproductive family



E. Sustainability: Health Literacy of WP + Health ownership established as family care culture + Community health networks



Health In Action 醫護行者
[葵青區低收入在職家庭喜訊]

葵家社康匯
Kwai Tsing Community
Health Management Hub

Primary Care Community Pharmacy



Healthy living advice

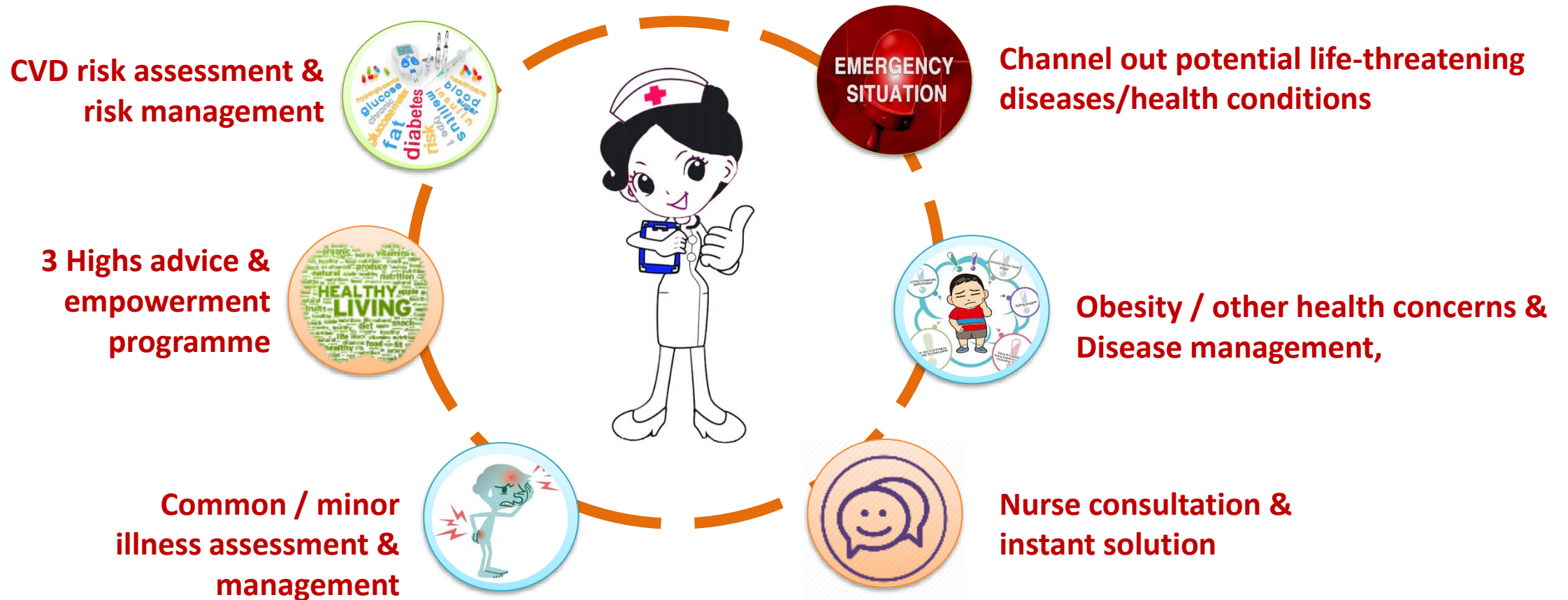
Instant solution

Respond to minor illness and pain problem

Stop smoking advice

Medication consultation

Nurse Clinic



Weight Management Unit



Pain and Occupational Health Unit





醫護行社區藥房

Health In Action Community Pharmacy
Health In Action Limited

「社區藥劑師」與你同行
助你建立健康

服務內容

- 配藥服務與全面藥物諮詢
- 新處方藥物跟進
- 輕微疾病管理

Services

- Dispensing service and medication consultation
- New prescription follow-up
- Minor ailment services



咳嗽、傷風、感冒
cough, cold



痛症、腸胃不適
pain, stomach & bowel issue



皮膚問題
skin problem

- 季節性流感疫苗注射

- Flu vaccine program

服務收費

- 免費項目：
一般藥物諮詢，藥物講座，社區健康教育
- 優惠項目：
藥物及醫療用品，
季節性流感疫苗注射
- 收費項目：
全面用藥評估
(只適於醫健通使用者)

Service Fees

- Free items: general medicine enquiries, medication seminars and community health education
- Discount items: medicine and medical device, flu vaccination
- Chargeable item: comprehensive medicine use review (for eHealth user only)

開放時間 Opening Hours

一 Mon	二 Tue	三 Wed	四 Thur	五 Fri	六 Sat	日 Sun	公眾假期 PH
11:30 am	10:00 am	10:00 am	11:30 am	10:00 am	非開放時間		
8:30 pm	7:00 pm	7:00 pm	8:30 pm	7:00 pm	Non opening hours		

* 午息時間 Rest time: 2:30 pm to 3:30 pm



- Primary care role
 - Health literacy enhancement
 - Participative decision of patients
 - Engage care giver
 - Triage role
 - Vaccination
 - Smoking cessation
 - Enhance health status
 - Transdisciplinary team
- Medication optimization

Characteristics & Uniqueness

- *Family Health Management*
- *SDH management*
- *Medical subsidy scheme*

Holistic



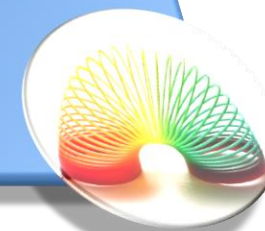
- Multidisciplinary team in a Hub
- Community pharmacy
- Case management
- Timely management

One-stop



- Mobile centres & outreach team
- Opening hour
- Telehealth follow up
- Health intervention programmes

Flexibility



社醫共生



Crossroads Foundation
國際十字路會



醫護行者
Health In Action



香港聖公會麥理浩夫人中心
H.K.S.K.H. Lady MacLehose Centre



基督教香港信義會社會服務部
Evangelical Lutheran Church Social Service - Hong Kong



醫院管理局
HOSPITAL AUTHORITY



UNHCR
The UN Refugee Agency
聯合國難民署

DALY 帝理律師行
& ASSOCIATES



香港融樂會
Hong Kong Union



International Social Service
HONG KONG BRANCH
香港國際社會服務社



Advocacy
倡議

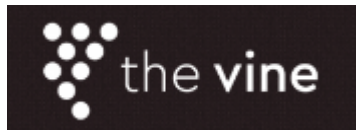
Service
服務



Research
研究

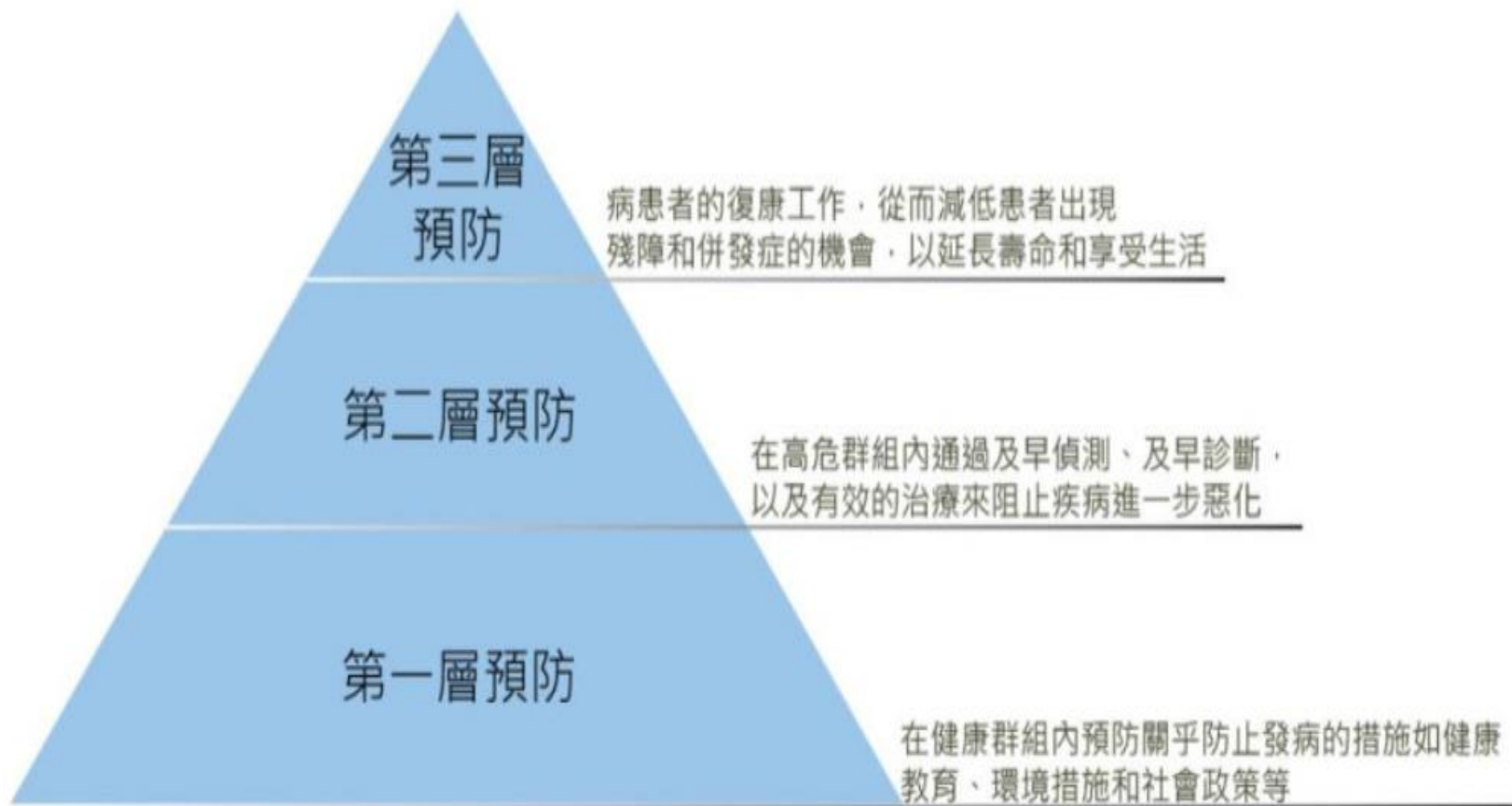


HONG KONG CHRISTIAN SERVICE
Centre for Harmony & Enhancement of Ethnic Minority Residents



JUSTICE CENTRE | HONG KONG
PROTECTING FORCED MIGRANTS' RIGHTS

基層醫療



- (1) 健康推廣直接預防疾病出現
- (2) 以健康風險評估及早減低患病風險
- (3) 慢性疾病管理及社區復康服務減慢慢性病惡化



專家話
眾多醫療改革都聚焦在融資議題，當局仍欠缺動力推動基層健康照顧...

日期 | 內容
11.18.18



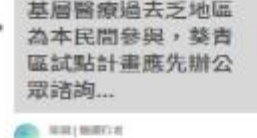
醫護行者
預算案\$712億帶醫療，醫生批沒解決人手不足，協助預防疾病

日期 | 內容
01.02.18



醫護行者
基層醫療過去之地區為本民間參與，葵青區試點計畫應先辦公眾諮詢...

日期 | 內容
09.12.17



醫護行者
衛生署發現8成港人患病不請假，醫生：夾硬逼工容易惹病

日期 | 內容
26.11.17



醫護行者
港大醫學院倡「一家一醫生」 冀對齊成人及兒童治療

日期 | 內容
03.01.18



醫護行者
當局似乎尚未能解答，葵青地區康健中心實際運作及執行計劃的疑問...

日期 | 內容
26.04.18



醫護行者
港人對家庭醫生之認知 李國雄：唔止咁位風咗

日期 | 內容
11.22.17



醫護行者
地庫成人失康成困擾 醫生籲改善聽障環境

日期 | 內容
09.12.17



醫護行者
七成受訪者從未聽聞明年9月便開幕的康健中心，公眾諮詢非常不足...

日期 | 內容
20.08.18



醫護行者
我們對政府積極推動基層醫療有期望，應儘快在葵青區做地區諮詢...

日期 | 內容
09.01.18



醫護行者
地庫成人失康成困擾 醫生籲改善聽障環境

日期 | 內容
09.12.17



醫護行者
香港良言健康不均 在醫基層心血管疾病風險高 公院求醫困難

日期 | 內容
16.09.17

貧窮焦點2015： 金錢以外的貧窮面向

Poverty in Focus 2015:
Going Beyond Financial Assistance
- a New Approach on Poverty Alleviation



社聯介紹 香港社會服務聯會

香港社會服務聯會（簡稱：社聯）是一個擁有超過440個非政府社會福利服務機構會員的聯合組織，其會員為本地市民提供超過九成的社會福利服務。社聯與機構會員致力推動更完善的社會福利政策及服務，鼓勵社會服務機構作跨界別合作，並促進公平、公義及關懷的社會。

政壇

一個真正健康的香港：建設以社區為本的跨 界別基層醫療系統

2017年9月 第二十三期

社聯政策報 POLICY BULLETIN

香港基層醫療：反思與前瞻

- 反思本地基層醫療的發展過程
- 海外基層醫療制度的啟示
- 以個案分析醫社合作的前景



OUR HONG KONG
FOUNDATION
團結香港基金

以人為本 縱橫整合 香港醫療體系

行政摘要

